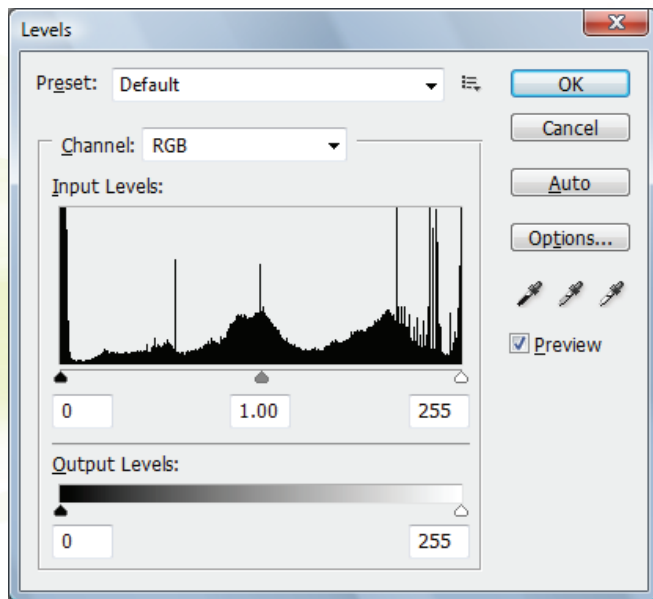
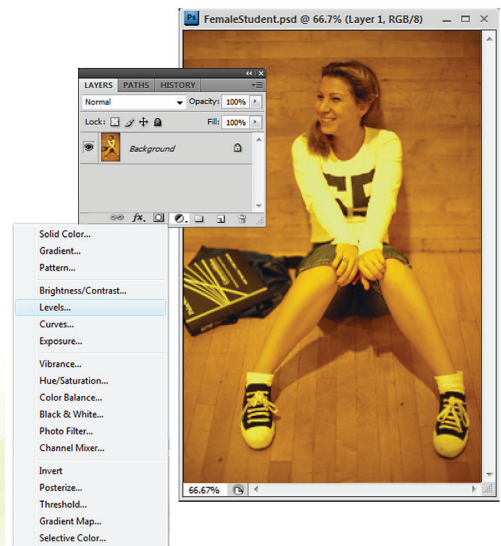


Photoshop® Tip: Removing Color Cast Using Levels Adjustment Layer

1. Select the **Layer Adjustment** tool from the bottom of the **Layers** palette.
2. Select **Levels**.



3. Select the **white eyedropper** inside the Levels Window.



4. Using the eyedropper, click on the area of the image that should be white. This will reset the white balance of the image.